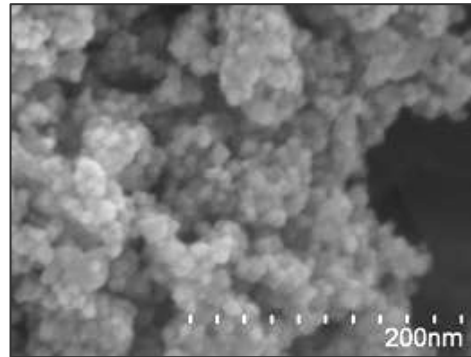


Conductive tin oxide CP Series

Features

- Antimony free
- Low powder resistivity (conductive)
- Excellent transparency
- Near-infrared absorption effect
- Light resistant stability



General characteristics

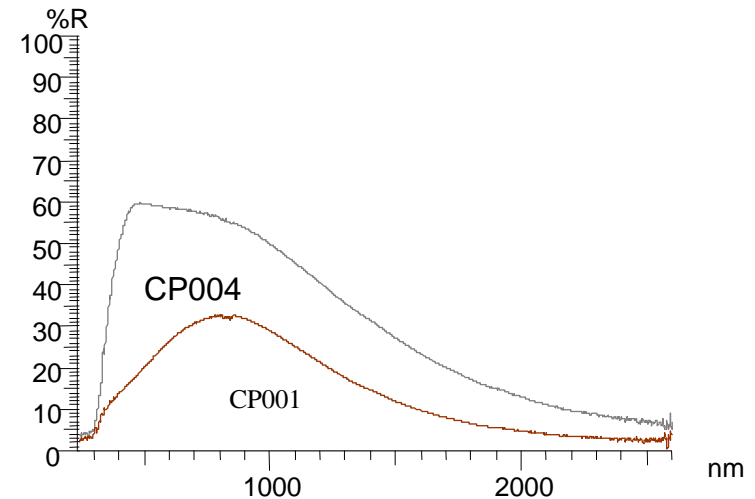
Name	CP001	CP004
Appearance	Dark brown	Light gray
Crystal structure	SnO ₂ micro crystals	
Refractive index	2.00	
Specific gravity	6.95	
Absorption edge	3.5 eV (355 nm)	
Specific surface area	40 – 60 m ² /g	
Crystal size* ¹	5 – 10 nm	
Powder resistivity* ²	10 ⁻¹ - 10 ¹ Ω•cm	10 ¹ - 10 ⁴ Ω•cm
Surface resistivity* ³	10 ⁶ - 10 ¹² Ω/□	
pH	3.5 - 4.5	

*1: X-ray diffraction analysis

*2: Press pressure 150 kg/cm²

*3: Adjusted by pigment concentration in coating

Reflectance spectrum (pressure molded powder)



Coating colour samples (film thickness 1 μm)

